



Joint Research Centre

The European Commission's in-house science service

www.jrc.ec.europa.eu

Dr. Stephan Lechner

Director

Institute for the Protection and
Security of the Citizen

Serving society

Stimulating innovation

Supporting legislation



Joint
Research
Centre



Our Mission... is to provide customer-driven scientific and technical support for the conception, development, implementation and monitoring of EU policies.

Our Vision driven by the Europe 2020 Strategy... is to be a trusted provider of science-based policy options to EU policy-makers to address key challenges facing our society, underpinned by internationally-recognised research.

Our Impacts for the EU citizen... supporting general well-being via harmonised research on energy, environment, transport, climate change, safety of food and consumer products, crisis management, and nuclear safety and security, that have important positive impacts on the daily life of the citizen.



The EU strategy for growth and jobs

Europe 2020 – The Flagship Initiatives

Smart growth

- Digital agenda for Europe
- Innovation Union
- Youth on the Move



Sustainable growth

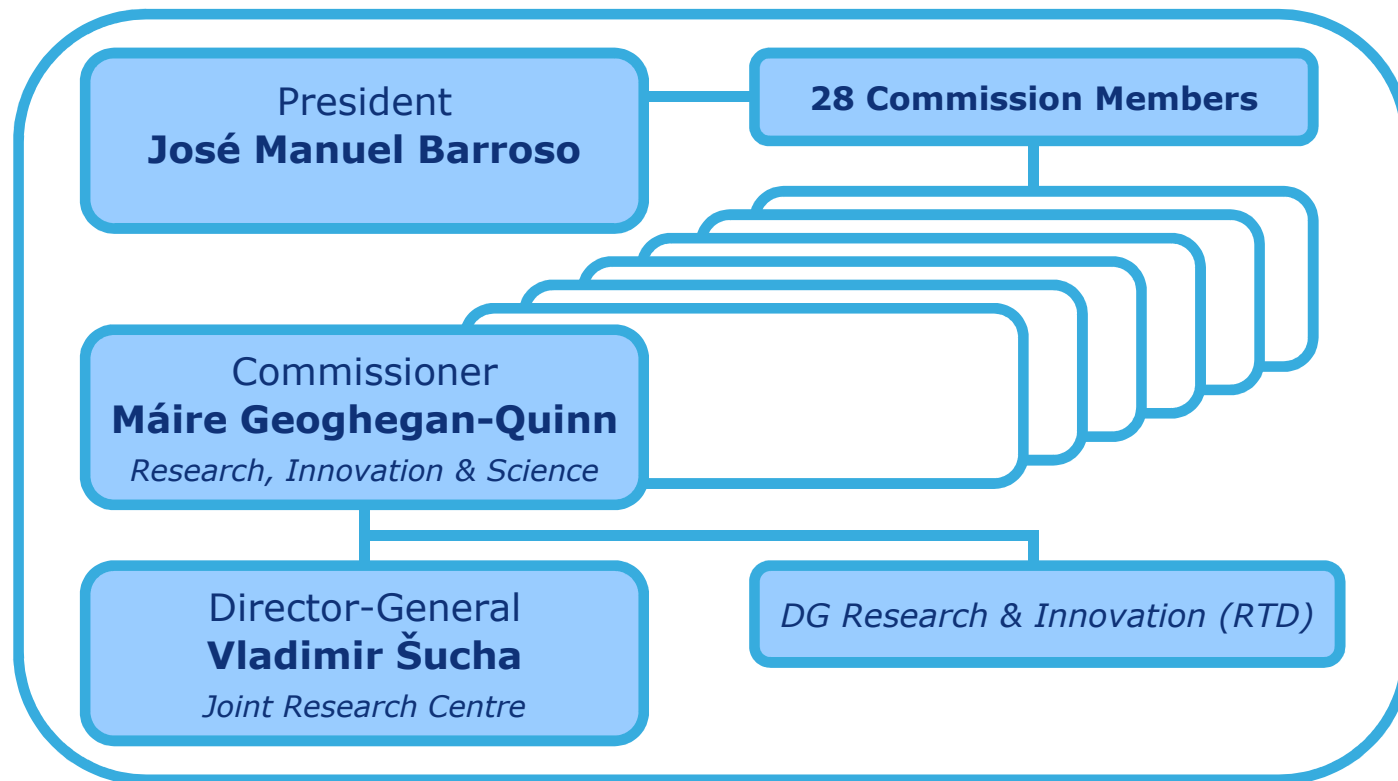
- Resource efficient Europe
- An industrial policy for the globalisation era

Inclusive growth

- An agenda for new skills and jobs
- European platform against poverty



The JRC inside the European Commission



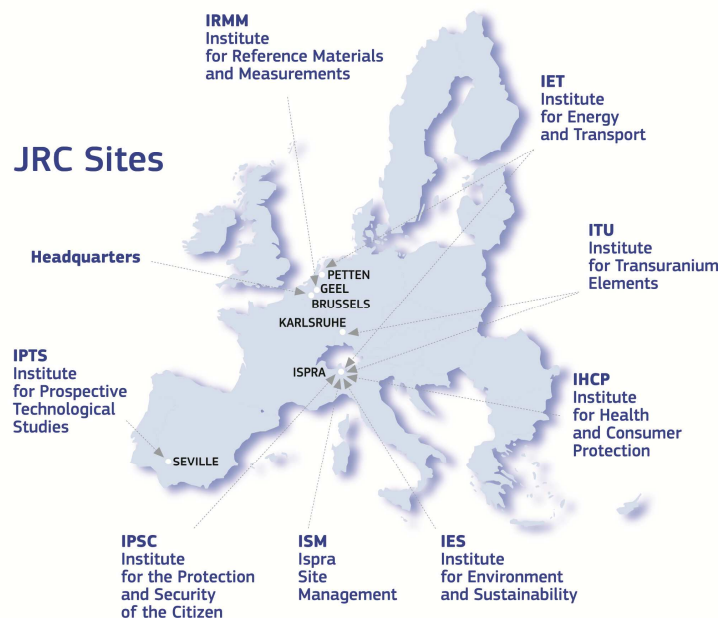
Main competence areas

- Energy
- Clean transport
- Environment & Climate change
- Agriculture & Food security
- Health & Consumer protection
- Safety and security, including nuclear
- Information and communication technology



Established 1957

- 7 institutes in 5 countries: Italy, Belgium, Germany, The Netherlands, Spain
- 2,890 permanent and temporary staff in 2013
- 1,377 scientific publications in 2013
- 125 instances of support to the EU policy-maker annually
- 2013 Budget: €424 million, plus €70 million earned income



Where you can find us

- **Corporate Services** – Brussels
- **IRMM** – Geel, Belgium
Institute for Reference Materials and Measurements
- **ITU** – Karlsruhe, Germany and Ispra, Italy
Institute for Transuranium Elements
- **IET** – Petten, The Netherlands and Ispra, Italy
Institute for Energy and Transport
- **IPSC** – Ispra, Italy
Institute for the Protection and Security of the Citizen
- **IES** – Ispra, Italy
Institute for Environment and Sustainability
- **IHCP** – Ispra, Italy
Institute for Health and Consumer Protection
- **IPTS** – Seville, Spain
Institute for Prospective Technological Studies



IPSC: facts and figures

- **Staff:** 346 total (January 2014)
- **Organisation:** 7 scientific units
- **Budget:** 30% from competitive projects
- **Research:** 7 laboratories
- **Science:** 84 peer-reviewed journal articles in 2013
- **Policy support:** Working for 20 DGs in Brussels



IPSC: mission

The mission of the IPSC is to enhance safety and stability of the European society on the basis of an agreed EU agenda by creating scientific results and turning them into measurable impact.

Based on a combination of advanced ICT and engineering expertise, IPSC provides European policy makers with scientific and technology advice on issues relevant to safety, security and stability within and outside the EU.

Due to the horizontal nature of its work, the IPSC closely collaborates with a large number of European and international stakeholders from different expert communities.



IPSC Concept and Units

Intelligent **Mechanisms** for Protection and Security of the Citizen

Monitoring &
Surveillance

Global Security and Crisis Management
Delilah Al Khudhairy

Maritime Affairs
Alessandra Zampieri

The individual
Citizen

Digital Citizen Security, Jean-Pierre Nordvik

Infrastructure
Protection

**European Laboratory
for Structural Assessment**
Artur Pinto

Financial Analysis
Francesca Campolongo

**Security Technology
Assessment**
Neil Mitchison

Society

Econometrics and Applied Statistics, Andrea Saltelli

Core competences

IPSC is an applied research and development institute, aimed at analyzing, modelling and developing new **security applications**.

Our core competences are:

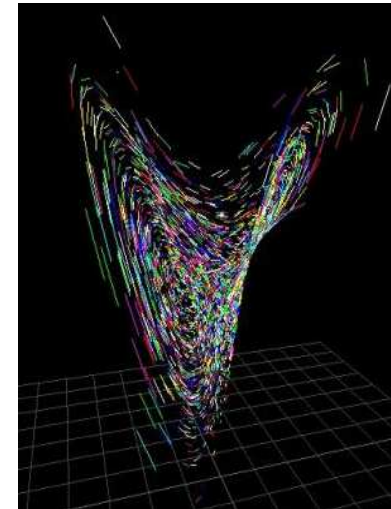
**Information and
Communication
Technologies**



Engineering



Complex Systems



IPSC work is focused on **method development**, improvement and assessment, up to prototype implementation. IPSC does **not** perform any **operational** law enforcement nor control activity.

Remote sensing and data analysis

Satellite image interpretation and analysis



Damage & needs assessment

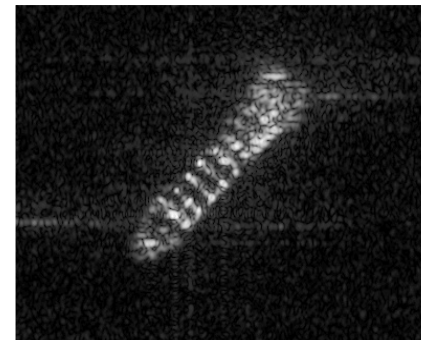
Web Mining and intelligence, statistical data mining



Geo-spatial intelligence and analysis, GIS

GPS, Navigation

Risk analysis

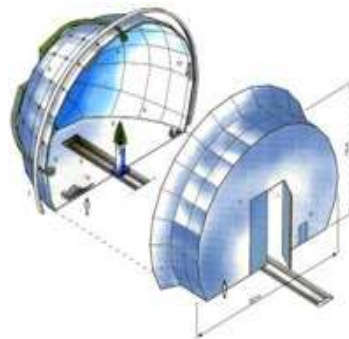


SAR image

- Maritime surveillance
- Container monitoring
- Fisheries data management

Key research facilities

European Laboratory for
Structural Assessment (ELSA)



European Microwave
Signature Laboratory (EMSL)

European Crisis
Management Laboratory
(ECML)





Live IPSC web information systems

GDACS: Global Disaster Alert and Coordination System

Europe Media Monitor - Newsbrief
Europe Media Monitor - Medsys

<http://www.gdacs.org/>

<http://medusa.jrc.it/>

<http://press.jrc.it>

20 February 2014





Key partners

We work for:

European Commission services:

- via the institutional work programme and competitive projects

Council of the European Union:

- SitCen, EDA, EUSC

Member States authorities:

- first responders and law enforcing agencies

UN agencies:

- IAEA, FAO, ICAO, OCHA, UNDP, UNDPKO, WHO ...

International organizations:

- ESA, OECD, EEAS

We work with:

National Research Centers:

- TNO, VTT, Fraunhofer, DLR, FOI (Swedish defence research agency), DGA, CEA,

Industry and University:

- partners in competitive research projects



Joint Research Centre (JRC)

www.jrc.ec.europa.eu

Contact: jrc-info@ec.europa.eu

*Serving society
Stimulating innovation
Supporting legislation*

20 February 2014

Joint
Research
Centre

